



# PowerPeel<sup>®</sup>

## Microdermabrasion System



## Operator Manual

**UBS Aesthetics**  
Exclusive National Distributor of  
PowerPeel<sup>®</sup> Microdermabrasion System

# TABLE OF CONTENTS

---

|  |  |    |
|--|--|----|
| <b>SECTION 1</b>                           |  |    |
| <b>GENERAL INFORMATION.....</b>            |  | 1  |
| 1.1 History.....                           |  | 1  |
| 1.2 Introduction.....                      |  | 1  |
| 1.3 System Description.....                |  | 2  |
| 1.4 Parts Description.....                 |  | 3  |
| 1.5 4000N System.....                      |  | 4  |
| <b>SECTION 2</b>                           |  |    |
| <b>SPECIFICATIONS.....</b>                 |  | 5  |
| 2.1 Specifications.....                    |  | 5  |
| <b>SECTION 3</b>                           |  |    |
| <b>INSTALLATION .....</b>                  |  | 6  |
| 3.1 System Installation Procedure .....    |  | 6  |
| <b>SECTION 4</b>                           |  |    |
| <b>OPERATION .....</b>                     |  | 7  |
| 4.1 Operative Procedures .....             |  | 7  |
| <b>SECTION 5</b>                           |  |    |
| <b>TREATMENT .....</b>                     |  | 8  |
| 5.1 Treatment Procedures .....             |  | 8  |
| 5.2 Indications .....                      |  | 11 |
| <b>SECTION 6</b>                           |  |    |
| <b>CONTRAINDICATIONS .....</b>             |  | 12 |
| 6.1 Contraindications .....                |  | 12 |
| <b>SECTION 7</b>                           |  |    |
| <b>SAFETY .....</b>                        |  | 14 |
| 7.1 Safety Precautions .....               |  | 14 |
| <b>SECTION 8</b>                           |  |    |
| <b>MAINTENANCE .....</b>                   |  | 16 |
| 8.1 System Maintenance .....               |  | 16 |
| <b>SECTION 9</b>                           |  |    |
| <b>TROUBLE SHOOTING GUIDE .....</b>        |  | 17 |
| 9.1 Troubleshooting .....                  |  | 17 |
| 9.2 Maintenance Tips.....                  |  | 20 |
| 9.3 Replaceable Parts & Illustrations..... |  | 21 |
| <b>SECTION 10</b>                          |  |    |
| <b>WARRANTY &amp; FORMS .....</b>          |  | 24 |
| 10.1 Warranty.....                         |  | 24 |
| <b>MEDICAL HISTORY &amp; CONSENT FORMS</b> |  |    |

**1.1 HISTORY**

Microdermabrasion was developed in Europe in the mid 1980's. Microdermabrasion was approved by the FDA in 1996 and actively marketed in the USA as the PowerPeel® Microdermabrasion System. This system is designed for both the medical and spa markets for the treatment of fine lines, sun damage, hyperpigmentation, uneven skin tone, oily and acne prone skin, comedones, enlarged pores and as a pre-laser treatment. The PowerPeel® Microdermabrasion System works by vacuuming ultra-fine aluminum oxide crystals across the surface of the skin, exfoliating gently and precisely, removing dead skin cells and revealing the new softer, fresher skin below. The finely abrasive action also stimulates the production of new skin cells, collagen and elastin to further improve the skin's appearance.

- Treatments should be performed every 7 to 10 days for a series of 6 to 12 sessions followed by monthly maintenance treatments.
- It is recommended that all operators of the PowerPeel® Microdermabrasion System read this manual in its entirety and complete training by one of our representatives before attempting to perform treatments with this system.

**1.2 INTRODUCTION**

**UBS Aesthetics**  
**Exclusive National Distributor of the**  
**PowerPeel® Microdermabrasion System**

UBS Aesthetics is a national distributor for clinically proven or FDA cleared products and equipment. Our selection process for products and services maintains the highest standard of quality in the industry. We provide unsurpassed customer service for the life of your equipment. Our commitment, integrity and honesty are proven by our customer satisfaction and loyalty.

**UBS Aesthetics** also represents a variety of other products and equipment intended for use in the aesthetic industry. You may see our entire product offering by visiting our website at [www.ubs aesthetics.com](http://www.ubs aesthetics.com).

**UBS Aesthetics** is committed to bringing you the highest quality products and the highest level of customer service available in the industry. Please call us directly at 1-800-925-5022 if you have any questions. We are happy to hear from you and are available to assist you with treatment questions and technical support for the life of your equipment. Our office hours are Monday through Friday, 8:30 AM – 5:00 PM EST.

**1.3 SYSTEM DESCRIPTION**

The major components of the PowerPeel® 4000N are the vacuum pump, compressor, metal handpiece and tubing interlink. The angled, user-friendly, controlled handpiece is made from stainless steel with a titanium venture valve and is fitted with a makrolon tip with an oval aperture through which air and crystals flow. This tip is changed between each procedure. Plastic tubing connects the handpiece to the system's two crystal containers.

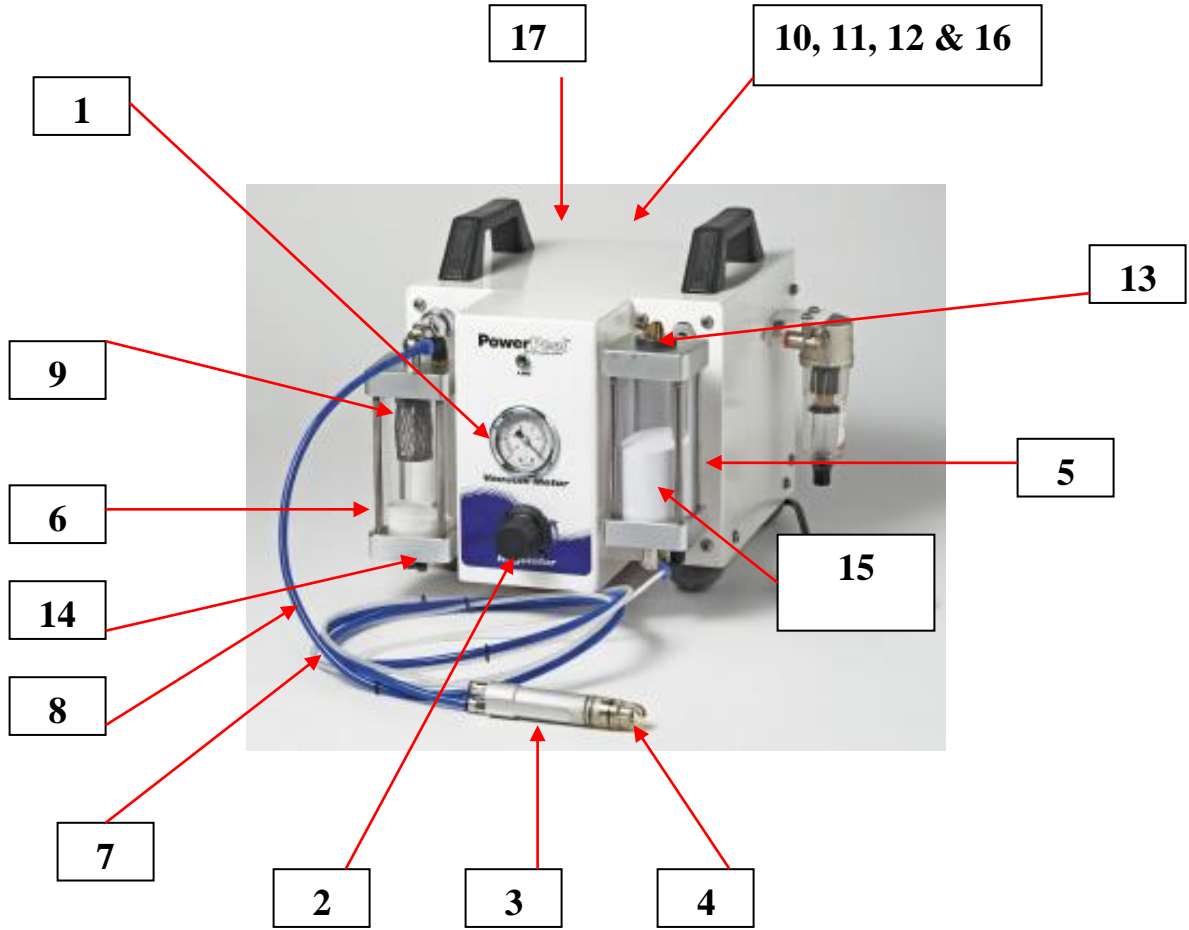
When the handpiece is placed in full contact with the skin, a vacuum is created, thereby activating the system's crystal flow. This vacuum may be visually confirmed by watching crystals agitate in the clean container. The airflow system begins at the compressors intake port, then passes through the clean crystal container and carries the crystals through the tubing to the handpiece. The patented engineered shape of the handpiece nozzle allows a uniform and effective exfoliating action. Once the crystals pass over the skin, the used crystals are vacuumed into the sealed waste container. The speed of the crystal flow may be controlled by adjusting the regulator knob.

**1.4 PARTS DESCRIPTION**

- |     |                         |  |
|-----|-------------------------|--|
| 1)  | Vacuum Meter            | Indicates the power setting for the vacuum flow (suction).   |
| 2)  | Regulator Knob          | Regulates the power setting for the vacuum flow (suction).   |
| 3)  | Operator Handpiece      | Applicator that vacuums crystals across the surface of the skin.                                   |
| 4)  | Disposable Plastic Tip  | A makrolon plastic tip that is placed at the end of the handpiece to direct crystal flow.          |
| 5)  | Clean Crystal Container | Houses the clean crystals.   |
| 6)  | Waste Crystal Container | Houses the used (waste) crystals.  |
| 7)  | Crystal Delivery Tube   | Tubing that connects the clean crystal container to the handpiece (small tube).                    |
| 8)  | Crystal Recovery Tube   | Tubing that connects the waste crystal container to the handpiece (large tube).                    |
| 9)  | Waste Filter            | Prevents crystals from entering the vacuum pump. Waste filter is located in the waste container.   |
| 10) | On/Off Switch           | Located on the left rear corner above the power cord (not visible in photo).                       |
| 11) | Power Cord Plug         | Located in left rear corner of system. Plugs into 120 Volt wall outlet (not visible in photo).     |
| 12) | Fuse Housing            | Located in left rear corner of system. Contains two 5 AMP fuses (not visible in photo).            |
| 13) | Clean Container Stopper | Plug on top of the clean container.  |
| 14) | Waste Container Stopper | Plug at the bottom of the waste container.   |
| 15) | Crystals                | Located in the Clean Container.  |
| 16) | Serial Number Plate     | Manufacturer's identifying serial number located in center rear of cabinet (not visible in photo). |

**To order the above parts, call UBS Aesthetics at 1-800-925-5022.**

1.5 4000N SYSTEM  
PowerPeel® Microdermabrasion System – 4000N



**2.1 SPECIFICATIONS**

|                       |                  |
|-----------------------|------------------|
| Supply Voltage        | 110 Volt/220     |
| Frequency             | 60/50 HZ         |
| Fuses                 | 2 x 5 AMP        |
| Vacuum Pressure       | 20 to 60 cmHg    |
| Positive Air Pressure | 2.5 BAR          |
| Class                 | IEC – 601 – 1(1) |
| Dimensions            | 20 x 30 cm       |
| Weight                | 38 lbs/15 kg     |
| Ratings               | ISO-9002         |

### 3.1 SYSTEM INSTALLATION PROCEDURE

Please retain the box in which the 4000N system was shipped for future use. This box should be used to ship the PowerPeel® 4000N to the corporate office for service.

1. Remove the system from the box by lifting the black handles. Remove the plastic covering from the 4000N and store in box for use in shipping equipment for service reasons.
2. Place the system on a sturdy tabletop or counter.
3. Unpack the two crystal containers, plastic tips, crystals, plastic tubing and power cord.
4. Connect the clean and waste containers as follows:

**Waste Container:** The waste container, which has the large filter, fits into the front left opening as indicated in the picture. It is important that the filter is located at the top of the waste container, with the stopper at the bottom. The long metal rod on the waste container fits at the bottom of the left opening, simultaneously as the top part of the waste container's bolt opening fits in the snap ring. Turn the bolt (at the top of the waste container) clockwise to secure.

**Clean Container:** The clean container has a smaller filter (gold) located at the bottom of the container and the stopper at the top. The long, metal rod on the clean container fits at the top of the right opening, simultaneously as the bottom part of the clean container's bolt opening fits in the snap ring. Turn the bolt (at the bottom of the clean container) clockwise to secure.



5. Insert the large blue tube into the large opening at the bottom of the handpiece and the other end into the large fitting (metal piece with a blue lid) at the top of the waste container. Insert the smaller clear tube into the small opening at the bottom of the handpiece and the other end into the small fitting (metal piece with a blue lid) at the bottom of the clean container.
6. Place a disposable plastic tip on the top of the handpiece (where there are 2 o-rings) using a twisting motion while applying forward pressure until the pin on the handpiece fits into the groove on the plastic tip.
7. Remove the stopper from the top of the clean container. Fill the clean container with crystals to the fill line. Replace the stopper.
8. To ensure a tight seal on the stopper on the clean container, adjust the nut located on the opposite end of the stopper by turning clockwise and tightening the stopper again.
9. Check the stopper on the waste container to ensure it is tight. Tighten if necessary using the same method as on the clean container.
10. Connect power cord to unit and then to the wall outlet.

**Your PowerPeel® 4000N Microdermabrasion System is now ready for use.**



#### 4.1 OPERATIVE PROCEDURES

To ensure that your PowerPeel® 4000N Microdermabrasion System operates in the manner for which it was designed, it is imperative that the relative humidity in the room remain lower than 60%. Therefore, steamers, misters, hot towel machines and other possible sources of moisture should be located as far away from the PowerPeel® 4000N Microdermabrasion System as possible.

##### PROCEDURES:

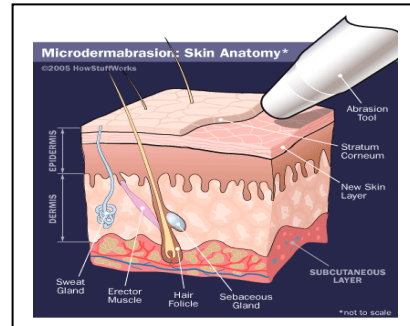
**DO NOT** turn on your PowerPeel® 4000N Microdermabrasion System until the installation procedure on the previous page has been successfully completed. Operate according to the instructions provided below. Before attempting to operate the PowerPeel® 4000N Microdermabrasion System, UBS Aesthetics strongly recommends that all operators read the instructions completely and successfully complete training by an approved UBS Aesthetics representative.

1. Operator is advised to wear eye protection, particulate mask and gloves while performing all PowerPeel® microdermabrasion procedures.
2. Turn on the power switch on the back left side of the system.
3. For the first treatment, set the vacuum control to 20hg. It is recommended that a proper setting be selected to perform two passes in the same treatment. The setting of 20hg is verified by placing your finger over the hole at the end of the handpiece tip and turning the regulator knob counter-clockwise until the vacuum meter needle is at 20hg. Place the open portion of the plastic tip completely over the skin. When the tip is properly placed on the skin, a successful system vacuum will be established, and the crystals in the clean container will begin to agitate.
4. **IMMEDIATELY** begin moving the handpiece in 2 to 3 inch strokes over the area being treated. Use your other hand to keep the skin taut while the handpiece is gliding over the skin. The system will continue vacuuming crystals across the skin as long as the aperture of the handpiece remains in full contact with the skin and the crystals in the clean container continue to agitate.
5. A trail of crystals will appear on the portion of skin that has been treated. Once the entire area to be treated has been covered, this is referred to as a “pass”. It is recommended that the crystals be removed between passes. A brush, dry sponge or gauze can be used to remove excess crystals.
6. A second pass can be done once the crystals are removed from the skin provided the appropriate power setting was selected.

## 5.1 TREATMENT PROCEDURES

**Facial Fact:**

Your skin is made up of two main layers, the **epidermis** and the **dermis**. The epidermis is the layer closest to the outside world. It is a set of dead skin cells on top of another layer of cells that are in the process of maturing. The topmost layer of the epidermis is called the stratum corneum. The stratum corneum mostly acts as a barrier between the outside world and the lower skin layers. It keeps all but the smallest molecules from getting through.



To perform a microdermabrasion treatment, the skin must be clean and dry. This will enhance the PowerPeel® treatments and overall clinical efficacy. Please follow the microdermabrasion treatment procedures below:

1. It is recommended to use a gentle cleanser as the initial step to clean the skin. It is critical to remove any moisturizer, make-up or any other product that may be on the skin.
2. After the skin has been cleaned, the skin should be treated with **Oasis Skin Solutions Microderm Prep Solution**. This product will remove any remaining residue on the skin and prepare the skin for the treatment.
3. The rate of exfoliation is directly related to the rate at which the handpiece is moved across the skin or stroke speed and the vacuum pressure setting. Vacuum pressure is increased by turning the regulator knob to the left. By increasing vacuum pressure, the rate of exfoliation increases.

It is recommended to start the microdermabrasion treatment on the forehead. The forehead can be treated using either horizontal or vertical strokes. Strokes should slightly overlap. The upper cheekbone area, including the area under the eye, is treated by moving the handpiece from the nose to the ear. The remainder of the cheek and jaw area is treated by moving the handpiece in an upward motion from the jaw line to the cheekbone area.



---

**5.1 TREATMENT PROCEDURES – Continued**

4. PowerPeel® offers the following vacuum power settings as a guideline only. The power setting you select will depend on the client's skin type and skin condition:
- 00 – 20** Low power setting selected for areas of sensitive skin, such as around the eyes (avoiding the lids), the neck, areas of rosacea, couperose, broken capillaries, etc.
  - 20 – 30** Low to medium power setting ideal for a client's first treatment and for regular treatments on slightly sensitive skin or for estheticians/ physicians with a slower stroke technique.
  - 30 – 40** Medium power setting used for most routine treatments.
  - 40 – 50** Medium to high power setting used for thicker skin, hyperpigmentation and scarred areas. The client will feel the abrasion. The handpiece should be moved in quick short strokes to avoid discomfort.

**NOTE:** Some clients with sensitive skin may find treatments uncomfortable. For clients with sensitive skin, it is recommended to use a lower power setting and perform additional treatments. (For example, 6 treatments at a normal setting are recommended for normal skin. For sensitive skin, it is recommended to perform more than 6 treatments at a lower setting). The treatment should never be painful. In most cases, clients find the treatments very enjoyable, as they receive an invigorating facial in addition to the treatment of the problem areas. Most clients notice softer and smoother skin after just one session. For significant results, at least 6 to 12 sessions are needed, spaced 7 to 10 days apart.

5. Once the proper vacuum setting is selected, the operator should use the thumb and forefinger of the free hand to hold the skin taut. This will improve contact between the handpiece tip and the skin, creating a more effective vacuum.
6. Begin treatment by gently moving the handpiece over the treatment area in short, quick strokes. In order to ensure a uniform exfoliation, cover the treatment area completely using horizontal strokes. When an area is completely covered in one direction, we refer to this as a "pass." It is recommended that two passes are made. Therefore, treat the same area again using vertical strokes at the same vacuum setting.
7. A light coating of crystals will appear on the portion of the skin that has been treated. After treatment is completed, simply brush away the remaining crystals.
8. Clean your waste filter after each client to ensure proper operation of your PowerPeel® Microdermabrasion System. The waste filter is cleaned by holding your finger over the handpiece tip hole, adjusting the vacuum setting to 50hg and quickly decreasing the vacuum setting to zero.
9. Discard the plastic tip after each client unless the client is having a series followed by maintenance peels, see Page 18 for more details.

**5.1 TREATMENT PROCEDURES – Continued****NEVER RECYCLE USED CRYSTALS!**

The crystals you have just used are contaminated with the dirt, oil and dead skin cells of the client you have just treated and have also been altered by use. They will not exfoliate properly a second time and must be discarded. In addition, by placing the used crystals in the clean container, the hygienic integrity of the system is compromised. Damage caused to your system due to re-use of crystals is not covered under your warranty.

The crystals provided for use with the PowerPeel® Microdermabrasion System are the only crystals approved by UBS Aesthetics for use with our equipment. They have been tested for safety and effectiveness and are manufactured to our specifications. The use of any other product with your PowerPeel® Microdermabrasion System may damage your unit. PowerPeel® is not liable for any damage which may occur with the use of other crystals or abrasives. Damage to the machine due to such use is not covered under your warranty.

**5.2 INDICATIONS**

Indications for use of the PowerPeel® Microdermabrasion System are fine line reduction, mild acne, mild discoloration, rough skin, enlarged pores and sun damage. The PowerPeel® Microdermabrasion System is designed to exfoliate gently and precisely, gradually improving abnormalities and leaving the skin looking fresher, younger, smoother and healthier. Your clients will enjoy an invigorating facial treatment while improving the health and appearance of their skin. The treatment is designed to last approximately 45 minutes.

Once the treatment is completed, the client can apply make-up. It is recommended that no products containing acid are used 72 hours before and after a microdermabrasion.

Proper assessment of the skin prior to treatment is essential. The skin thickness, degree of damage and pre-existing skin conditions must all be evaluated when deciding whether or not the PowerPeel® microdermabrasion treatment is appropriate for your client and when deciding on a power setting and number of passes. That is why the PowerPeel® Microdermabrasion System is only available to physicians and licensed estheticians. Following the initial assessment, clients with skin conditions which may require medical treatment should be referred to a physician for proper evaluation and treatment prior to a PowerPeel® treatment.

The PowerPeel® microdermabrasion treatment is ideal for use 7-10 days prior to a laser resurfacing procedure, as it enhances the effectiveness of the laser. It is also recommended for treating laser footprints, the line of demarcation on the neck following the laser resurfacing, once the client has completely healed. The PowerPeel® can be used alternately with glycolic or other professional acid treatments and Retin-A and Renova, when spaced at least seven days apart, to enhance their effectiveness.

**6.1 CONTRAINDICATIONS**

It is important to remember that not every client is a candidate for microdermabrasion. A careful evaluation of the skin is necessary, as well as a medical history to determine if your client has any known infectious or inflammatory skin disease or is on any medication which might interfere with healing or increase the risk of post-inflammatory hyperpigmentation. These include, but are not limited to, **Coumadin** and **Accutane**. Regular outbreaks of cold sores around the mouth indicate that the client's **Herpes Simplex Virus** is not well-controlled and the treatment could stimulate an outbreak. If there is an active Herpes outbreak, treatment should absolutely be avoided. Clients with flat warts should not be treated, as they can spread. If your client has diabetes which is not well under control, treatment should be avoided. Clients with **HIV** should not be treated with the PowerPeel® system. The closed loop system is designed specifically to prevent the transmission of disease, but the benefit of the treatment should be weighed against the potential risk to both the operator and the client. Due to the close proximity of the esthetician to the client during the treatment, it is not recommended that you treat those clients with known or suspected **TB**. A pregnant woman is not a candidate for microdermabrasion.

Various other conditions which limit the production of collagen, inhibit proper healing or increase the risk of the spread of infection should be avoided. It would be impossible to list every instance in which the treatment would be contraindicated, but a thorough medical history is recommended, along with a consent form clearly outlining the contraindications. Refer any clients with skin conditions which may require medical treatment to a physician.

**Products used at home which contain AHA or BHA Renova and Retin-A should be stopped 7 days prior to the treatment and not resumed for 7 days after the treatment.**

**Do not attempt** to combine an acid peel with a PowerPeel® microdermabrasion treatment, as there is an increased risk of side effects due to exfoliating too deeply and this process could be painful.

Unrealistic expectations can lead to disappointment. It is important that the esthetician and the client have a clear understanding of the expected results. Review carefully with the client the purpose for the treatment, the realistic expectations, the possible side effects and the contraindications. It is important for the client to know these contraindications. If they are diagnosed with an illness or prescribed medication in the middle of their series of treatments, they need to inform you of this fact. It is also imperative that clients understand that adherence to a prescribed skin care regimen at home is vital to maintaining the results they achieved with this treatment.

**SECTION 6****CONTRAINDICATIONS****6.1 CONTRAINDICATIONS - Continued**

| <b>If client has had the following procedures:</b>         | <b>The allotted time below states how long you should wait to perform a PowerPeel® treatment:</b>  |
|--|--|
| Collagen Injection   | At least 14 days.  |
| Botox Injection  | 7 to 14 days   |
| Laser Resurfacing  | Approximately eight weeks or until the client is completely healed with no sign of erythema.   |
| Chemical Peel  | Until the client is completely healed with no sign of erythema.  |
| Accutane Therapy   | Client should consult with their physician. A minimum of six months is recommended.  |
| <b>If your client is planning on having the following:</b> | <b>Wait the allotted time below:</b>   |
| Collagen or Botox Injection                                | No need to wait AFTER having the PowerPeel®.   |
| Laser Resurfacing  | 7 to 10 days AFTER the PowerPeel® to enhance the effect of the laser. Notify physician that a PowerPeel® microdermabrasion treatment has been performed. |
| Chemical or Acid Peel                                      | 7 to 10 days AFTER the PowerPeel®. Notify the physician or esthetician.  |
| Glycolic or TCA Peels                                      | PowerPeel® and other superficial peels can be used alternately, but must be spaced at least a week apart.  |
| Accutane Therapy   | Consult the physician.   |

**7.1 SAFETY PRECAUTIONS**

The PowerPeel® Microdermabrasion System was designed with safety in mind. The closed-loop system prevents cross-contamination between the clean crystal container and the waste container. There are very few known side effects to the client. The treatment is designed to be superficial. Your stopping point should always be the appearance of erythema. The PowerPeel® is extremely safe when used by a licensed skin care specialist. There are a few important factors to remember:

1. Eye protection for the client is essential.
2. Always have clients remove their contact lenses before the treatment.
3. Avoid treating the areas closest to the eye, including the lids.
4. It is recommended to use wet gauze, cotton balls or sun goggles to completely cover the eyes during and after the procedure when removing the crystals from the skin.
5. Crystal in the eye can be uncomfortable and may scratch the cornea if rubbed.
6. A particulate mask is recommended while performing the PowerPeel® procedure and when emptying and refilling the crystal containers.
7. Latex or vinyl gloves should be worn while performing the procedure as well as during cleanup. Be sure to ask your client if they have an allergy to latex. In this case, vinyl gloves should be used.
8. Always remove and discard the plastic tip after each client. Replace with a new tip. The tips are designed to be disposable. The tip will melt at temperatures necessary to adequately sterilize the material resulting in a slightly altered shape. This can cause an inadequate seal on the handpiece or a change in aperture size.
9. Tubing which has become contaminated or worn should be discarded and replaced. The tubing will last for approximately 50 treatments.
10. Dispose of used crystal by emptying into a sealed container and discarding with your regular trash. **NEVER RE-USE THE CRYSTALS.**



**7.1 SAFETY PRECAUTIONS - Continued**

11. Contaminated articles such as linen, cosmetic brushes, spatulas and other instruments used on the skin should be disposed of according to your facility's policy.
12. If necessary, the clean crystal container can be cleaned with a soft, dry brush. The containers should never be washed with any chemical agents as the use of alcohol or other chemicals could breakdown the plastic. The container must remain perfectly dry.
13. The metal handpiece is designed to last for thousands of cases. **It should be sterilized after any procedure which has resulted in exposure to blood or other body fluids.** To sterilize the handpiece, remove the brass fittings, o-rings and the plastic tip. Place the handpiece in an autoclave. For this reason, it is recommended that you purchase a second handpiece if you wish to continue treatments while the other handpiece is being sterilized.

In every instance, our goal is to ensure a safe and effective treatment for both you and your client.

## 8.1 SYSTEM MAINTENANCE

| ITEM                         | DESCRIPTION  |
|------------------------------|--|
| <b>Crystals</b>              | <ol style="list-style-type: none"> <li>1. Do not leave crystals in the waste &amp; clean containers overnight.</li> <li>2. To store crystals, keep original sealed container in a cool, dry place.</li> <li>3. Leave the silica gel packet in the container.</li> <li>4. Dispose of waste crystals after each use-<b>NEVER RE-USE CRYSTALS</b></li> </ol>  |
| <b>Containers</b>            | <ol style="list-style-type: none"> <li>1. Clean waste &amp; clean containers thoroughly with a soft brush or soft cloth at the end of each day.</li> <li>2. Use a <b>DIFFERENT</b> brush or cloth to clean the waste &amp; clean containers. Using the same brush for both containers could contaminate the containers. Do not use any liquid to clean the containers. <b>Never use alcohol or liquid cleaners. This can cause damage to the containers, the machine or both.</b></li> </ol>               |
| <b>Stoppers</b>              | <ol style="list-style-type: none"> <li>1. Clean stoppers daily by removing any crystal that have deposited on the stopper. This will ensure a good seal. Replace the stoppers when they become worn.</li> </ol>  |
| <b>Tubing</b>                | <ol style="list-style-type: none"> <li>1. All tubing is made of polyurethane. UBS Aesthetics recommends replacing tubing sets after 50 treatments, once a year or when tubing starts showing the first signs of wear by discoloring.</li> <li>2. Not replacing the tubing can cause a loss in vacuum pressure.</li> <li>3. Replace tubing <b>immediately</b> in the event of drawn blood during a procedure or if it becomes contaminated in any other way.</li> </ol>                                     |
| <b>Handpiece</b>             | <ol style="list-style-type: none"> <li>1. The handpiece is made of stainless steel with a titanium valve. The design of the handpiece allows for thousands of procedures.</li> </ol>   |
| <b>Fittings</b>              | <ol style="list-style-type: none"> <li>1. Change the small and large fittings every six months.</li> </ol>   |
| <b>Plastic Tips</b>          | <ol style="list-style-type: none"> <li>1. Keep the tips in their original packaging, clean and dry.</li> <li>2. They are pre-sterilized and individually sealed. Once the seal is broken, they are no longer sterile. The use of tips is for superficial peels.</li> <li>3. Discard after one use. If a client is having a series followed by maintenance peels, use the same tip (save in a clean and dry bag) for a maximum of 15 peels. <b>Before placing tip in dry bag, clean and dry.</b></li> </ol> |
| <b>Filters</b>               | <ol style="list-style-type: none"> <li>1. Clean waste filter before each treatment. To clean the waste filter, hold your finger over the tip aperture and turn the vacuum pressure to 50hg. While holding your finger over the tip aperture, rapidly turn the regulator knob to zero.</li> <li>2. Replace filter every 6-12 months depending on usage.</li> </ol>  |
| <b>Vacuum Regulator Knob</b> | <ol style="list-style-type: none"> <li>1. <b>The vacuum adjustment range of the regulator is much less than its physical range. A few turns may be required before the meter needle begins to rise from zero.</b></li> <li>2. <b>Maximum pressure will be reached well before the knob reaches its leftmost physical stop. Do not turn the vacuum knob to this stop or it may lock at full vacuum pressure requiring maintenance to free it.</b></li> </ol>  |
| <b>Press Blocks</b>          | <ol style="list-style-type: none"> <li>1. <b>Replace annually.</b></li> </ol>  |

## 9.1 TROUBLESHOOTING

| Difficulty               | Possible Cause  | Solution  |
|--------------------------|---|---|
| System does not turn on. | <p>Power cable is not plugged in.</p> <p>No power coming from the wall receptacle.</p> <p>Blown fuse.</p>   | <p>Connect power cable.</p> <p>Voltage on the wall outlet has to be 120V.</p> <p>Check facility circuit breaker.</p>  |
| Low vacuum pressure.     | <p>Waste container has not been emptied.</p> <p>Stopper does not fit securely.</p> <p>Old, bent or crimped tubes.</p> <p>Moisture on the skin.</p> <p>Tip is old or cracked.</p> <p>The handpiece fittings are reversed.</p> <p>Tubing is loose in the fittings.</p> <p>O-rings</p> <p>Filter</p> | <p>Empty crystals from waste container.</p> <p>Replace with a new stopper for a secure fit.</p> <p>Replace with a new tubing kit.</p> <p>Properly prepare skin with our Oasis Microderm Prep Solution. Skin must be dry.</p> <p>Replace the tip.</p> <p>The large fitting should be on the same side as the metal notch holding the tip (notch and groove should fit securely).</p> <p>Ensure both tubes (clear/blue) are securely inserted into the small/large fitting.</p> <p>Two o-rings should be on the end of the handpiece.</p> <p>The filter should be changed annually.</p> |
| Crystals do not flow.    | The clean container does not have the proper amount of crystal in it.   | Check the level of crystals in the clean container. The clean container should be nearly full with crystals for better flow.  |

## 9.1 TROUBLESHOOTING – Continued

| Difficulty                | Possible Cause  | Solution  |
|---------------------------|---|---|
|                           | <p>Crystal build-up in the handpiece.</p> <p>Balls of crystals in the clean container.</p> <p>Moisture on the skin.</p> | <p>Remove the plastic tip from the end of the handpiece. Insert the small wire service tool into the small hole in the metal tip of the handpiece to unclog. Place tubing back in handpiece and ensure both tubes are secure in the fittings.</p> <p>Turn unit off and remove clean crystal container. Turn clean container over and look for small balls of crystal. If they exist, this indicates moisture in the container. Empty the crystal from the clean container into a waste receptacle. Fill the clean container with new dry crystals. Check the relative humidity in the room where the PowerPeel® system is located. The humidity level should be below 60%.</p> <p>The client's skin should be completely dry before starting the treatment. To ensure that the skin is dry, use our Oasis Microderm Prep Solution and allow to dry completely prior to treatment.</p> |
| <p>Poor crystal flow.</p> | <p>Tubing is loose.</p> <p>Moisture in treatment room.</p> <p>Crystals were left in the clean container overnight.</p>  | <p>Tightly secure both tubes in the fittings. The tubes are considered secure if they cannot be removed without pushing down on the blue/black ring.</p> <p>Check the relative humidity in the room where the PowerPeel® system is located. The humidity level should be below 60%.</p> <p>Check that there is no moisture in the clean container. Empty the clean and waste containers every night (after last treatment) to ensure dry crystals for the next treatment.</p>   |

## 9.1 TROUBLESHOOTING – Continued

| Difficulty                         | Possible Cause                            | Solution   |
|------------------------------------|---|--|
| Broken fitting.                    | Handpiece was dropped or fitting is worn. | Replace with a new fitting. To remove the old fitting, use needle nose pliers or strong tweezers to unscrew the fitting. Screw in new fitting securely.<br><b>Be careful not to damage threads inside handpiece.</b> |
| The end of the handpiece is loose. | Handpiece dropped or damaged.             | Tighten the screw located at the center of the handpiece (where the crystals are released) with a Phillips head screw driver.  |

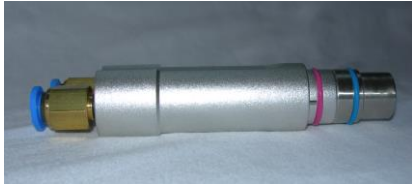
If the Troubleshooting Section cannot solve your problem, please call our Technical Support Department at 1-800-925-5022

## 9.2 MAINTENANCE TIPS

**Maintenance Tips****Keeps your PowerPeel System Running Smoothly!**

|                         |   |
|-------------------------|---|
| Disposable Plastic Tips | <ul style="list-style-type: none"> <li>▪ Tips are pre-sterilized and individually sealed. Once the seal is broken, they are no longer sterile. The use of tips is for superficial peels.</li> <li>▪ Assign the tip to the patient/client for series and maintenance peels for a maximum of 15 peels.</li> </ul> |
| Tubing                  | <ul style="list-style-type: none"> <li>▪ Replace once per year. Not replacing the tubing can cause a loss in vacuum pressure.</li> </ul>  |
| Crystal                 | <ul style="list-style-type: none"> <li>▪ Dispose after each use. <b>Never Re-Use.</b></li> </ul>  |
| Large Fitting           | <ul style="list-style-type: none"> <li>▪ Change every six months.</li> </ul>  |
| Small Fitting           | <ul style="list-style-type: none"> <li>▪ Change every six months.</li> </ul>  |
| O-Rings on Handpiece    | <ul style="list-style-type: none"> <li>▪ Replace once per year.</li> </ul>  |
| Waste Filter            | <ul style="list-style-type: none"> <li>▪ Replace every 6-12 months depending on use.</li> </ul>   |

9.3 REPLACEABLE PARTS & ILLUSTRATIONS  
4000N Microdermabrasion System

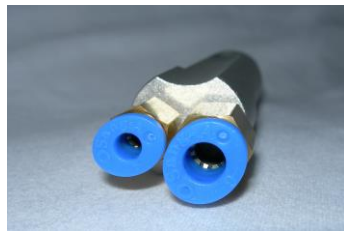


Handpiece



Tip Screw

Handpiece with  
Plastic Tip



Tubing Connections



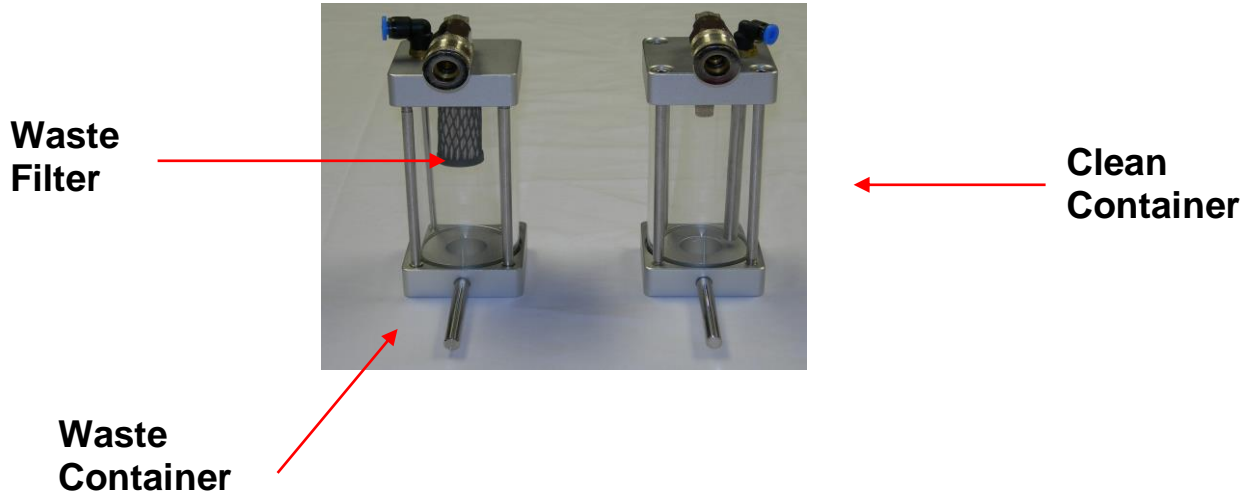
Large Fitting

Small Fitting

Tubing Set inserted  
into Large & Small  
Fittings on the  
Handpiece



9.3 REPLACEABLE PARTS & ILLUSTRATIONS  
4000N Microdermabrasion System



Waste Container



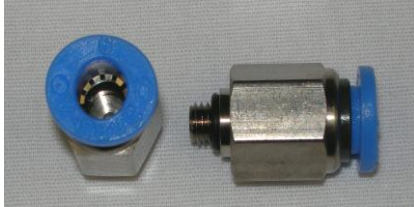
Clean Container



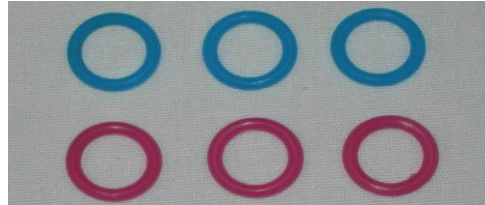
PowerPeel® Crystals for the  
Clean Container



**9.3 REPLACEABLE PARTS & ILLUSTRATIONS**  
**4000N Microdermabrasion System**



**Large Fitting**



**O-Rings  
(Set of 6)**



**Small Fitting**



**Large Elbow**



**Small Elbow**



**Tubing Kit**



**Stopper**

**10.1 WARRANTY**

Your 4000N PowerPeel® is under warranty for one-year by the manufacturer against manufacturing defects. In the event of a mechanical failure, the customer should call the Technical Support Department at 1-800-925-5022 for further instructions.

In many instances, problems can be solved over the telephone. It is recommended that the customer call from a phone within reach of the machine to follow some simple instructions from technical support and to answer a few questions about the failure. If we determine that the machine must be sent to us, we will ask you to return it in its original shipping box. All warranted repairs will be performed and the unit will be returned within 48 hours of receipt at no charge for parts or labor.

This warranty does **NOT** cover:

1. Any damage caused by acts of nature, incompatible power source, negligence, improper operation of the equipment, damage in transit, damage caused by customer's failure to replace worn external parts and damage caused by any attempt to alter equipment or make repairs not authorized by UBS Aesthetics.
2. Damage caused by the use of crystals or other abrasives other than those offered by UBS Aesthetics.
3. Routine maintenance items such as filters, tubing, tips, stoppers and fittings.

UBS Aesthetics shall perform repairs necessary for proper mechanical operation of the unit during the warranty period under the following terms:

1. The installation and technical repairs must be performed by personnel expressly authorized by UBS Aesthetics.
2. The electrical power outlet to which the unit is connected must match the power requirement displayed on the same unit endplate, which houses the power "on/off" switch.
3. The unit must be used only in the manner herein described:
  - a. The unit must NOT be operated after the useful life of the system-required disposable items has expired.
  - b. The unit must NOT be operated using system-required disposable items not purchased directly from UBS Aesthetics.
  - c. The Buyer/Operator shall **RETAIN THE ORIGINAL SHIPPING BOX** and shall return the unit to UBS Aesthetics for repair if directed to do so by our service personnel. **At no time** should the unit be returned to UBS Aesthetics without prior authorization and shipping instructions.

Failure to comply with the above listed terms:

1. May result in damage to the unit, which is not covered under warranty.

**10.1 WARRANTY - continued**

2. The crystals provided for use with the PowerPeel™ are the only crystals approved by UBS Aesthetics for use with our product. UBS Aesthetics crystals are manufactured to our specifications as to composition and size. They have been tested for safety and effectiveness. The use of any other product with your PowerPeel™ Microdermabrasion System may damage your unit. UBS Aesthetics is not liable for any damage which may occur from the use of other crystals or abrasives.
3. Clinical results may vary and are not guaranteed. UBS Aesthetics is not responsible for the failure to achieve results or damage resulting from operator's misuse of the machine.
4. Operators are required to be licensed aestheticians or physicians. It is recommended that you carry professional liability insurance.
5. UBS Aesthetics' sole liability shall be limited to the repair of unit only.
6. Buyer/Operator herein agrees to this limited liability as a condition of sale.





## Informed Consent PowerPeel™ Microdermabrasion Treatment

This form is designed to give you the information you will need to make an informed choice as to whether or not to undergo a PowerPeel™ microdermabrasion treatment. Although PowerPeel™ is effective in most cases. No guarantee can be made that a specific individual will benefit from the treatment.

A PowerPeel™ microdermabrasion treatment projects a flow of inert crystals over the skin and abrades epidermal tissues in the areas treated. Microdermabrasion is used for various skin conditions such as the treatment of acne, acne and chicken pox scarring, fine lines, sun damage and skin irregularities.

### **What are the possible side effects and complications of a PowerPeel™ treatment?**

Individuals having a PowerPeel™ microdermabrasion for one small scar can expect very minimal side effects and will require less pre and post op care, while those having large areas treated are more likely to experience the following effects (Note: These side effects do not occur in all individuals):

**COMFORT LEVEL:** You may feel some discomfort during the treatment. The sensation feels similar to very fine sand rubbing against your skin. If the treatment is too uncomfortable, the power setting can be decreased. After the procedure, a slight “wind-burned” sensation may continue for 24-48 hours.

**PIGMENTED CHANGES:** The treated area may heal with increased pigmentation (hyperpigmentation). This occurs most often in darker pigmented skin following exposure to the sun. Some individuals may have a predisposition to this type of reaction, and may have noticed it with minor cuts, abrasions or acne lesions. Protecting treated areas from exposure to the sun for three months should minimize the risk, although some rare individuals may still hyperpigment. Hyperpigmentation spots usually fade away in 3-6 months and medication can be given to speed up this process. Though rare, sometimes the hyperpigmentation changes can be permanent. In other individuals, treated areas may rarely lose pigmentation and not tan normally. This type of reaction is rare with microdermabrasion and tends to fade away, but in rare instances could be permanent.

### **Further Consideration for Consent**

1. I acknowledge that no guarantee has been given to me as to the condition of the complexion, skin pore size, wrinkle reduction or the amount or percentage of improvement expected following the treatment.
2. I acknowledge that for many conditions, more than one PowerPeel™ microdermabrasion treatment may be required in certain areas to achieve the desired result.
3. I acknowledge that no guarantee or assurance has been made by anyone regarding the procedure that I herein request and authorize.
4. If I know or suspect that I may be pregnant, I will inform the operator prior to treatment.

### **CONSENT:**

By signing below, I acknowledge that I have read the foregoing informed consent regarding the PowerPeel™ microdermabrasion treatment; and I have been adequately informed regarding the associated risks. I hereby give consent for the PowerPeel™ microdermabrasion procedure to be performed by:

\_\_\_\_\_  
Esthetician/Skin Care Professional

Date: \_\_\_\_\_ Time: \_\_\_\_\_

\_\_\_\_\_  
Client's Signature

\_\_\_\_\_  
Parent or Guardian (if patient is under the age of 18)



**Exclusive National Distributor of the  
PowerPeel® Microdermabrasion System**

**2436 Emrick Boulevard  
Bethlehem, PA 18018  
Toll Free: 1-800-925-5022  
Fax: 610-317-1672**

**Website: [www.ubsaesthetics.com](http://www.ubsaesthetics.com)  
Email: [info@ubsaesthetics.com](mailto:info@ubsaesthetics.com)**